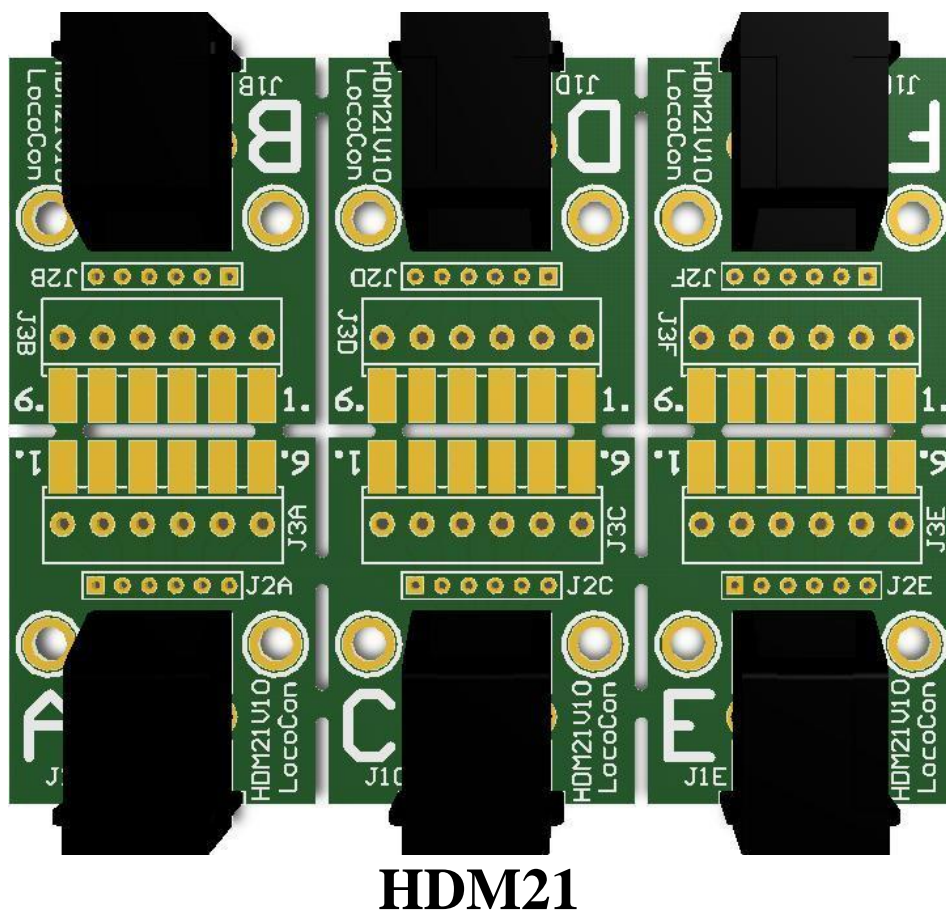


# LocoCon

# Manual



**Liability disclaimer:**

Use all items that can be bought and installation instructions that can be found on this site at your own risk. They have been developed for personal use, and I find them very useful. That is why I wish to share them with other model railroad hobbyists. All items and procedures have been tested and used on my own model railroad systems without causing any damage, but this does not necessarily imply that all modifications and procedures will work in any and all environments or systems. I cannot take any responsibility when items or procedures are used under different circumstances. Always use your own judgement and common sense!

# HDM21 LocoCon

This module can be used to make Loconet connections

J1A, J1B, J1C, J1D, J1E, J1D RJ12 connector Loconet

Note: Other connectors are not used.

Or

As extension of a LocoIO to a further remote connection (Max 200cm) of pushbuttons or LEDs with a consumption of Max. 5V / 25mA

J1A, J1B, J1C, J1D, J1E, J1D RJ12 connector LocoIO connection

J2A, J2B, J2C, J2D, J2E, J2D Pins (2,54mm pin distance)

J3A, J3B, J3C, J3D, J3E, J3D Screw clamp (3,81mm pin distance)

Pin1 = +5V

Pin2 = input/output 4

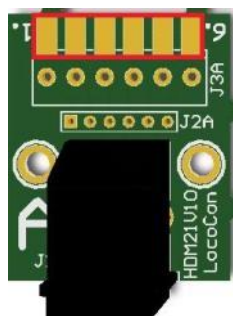
Pin3 = input/output 3

Pin4 = input/output 2

Pin5 = input/output 1

Pin6 = GND

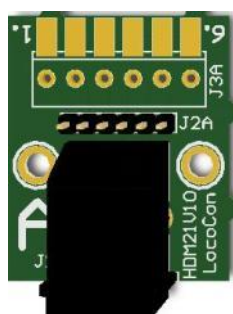
The LocoIO Extension can be made in different versions:



Direct soldering on the PCB  
(Default)



Screw connection  
(Option)



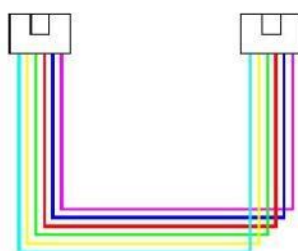
Pin connection  
(Option)



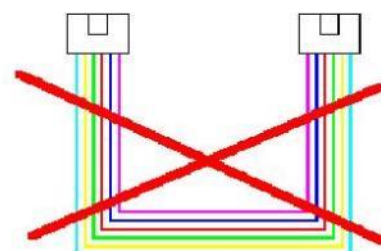
Or you can use any combination together  
(Option)

## LocoCon connection:

The connection to Loconet or LocoIO is with a 6 wire cable with RJ12 connectors. Important is that on the connector on both ends of the cable the pin1 to pin1 is connected.



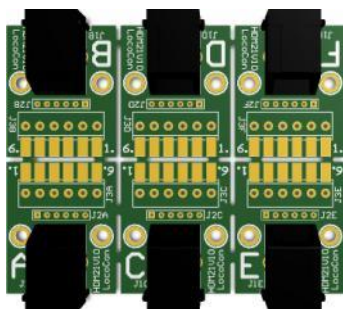
Correct



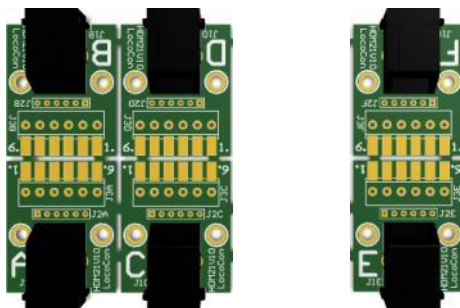
Wrong

**Different possibilities:**

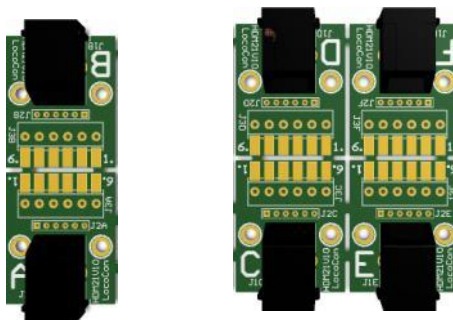
1) LocoNet 6 connections



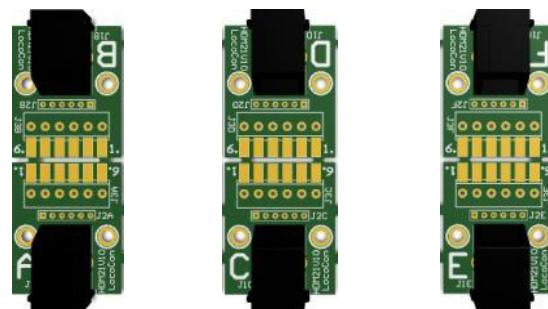
2a) LocoNet 4 connections  
LocoNet 2 connections



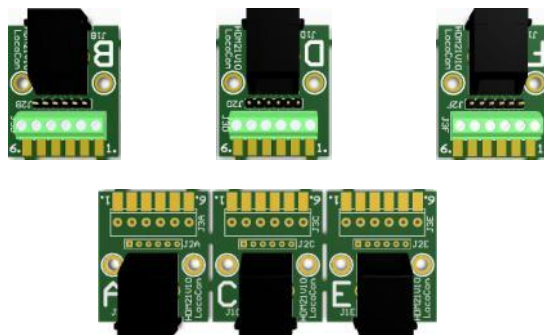
2b) LocoNet 2 connections  
LocoNet 4 connections



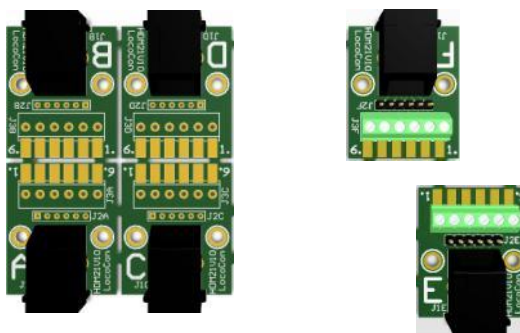
3) 3x LocoNet 2 connections



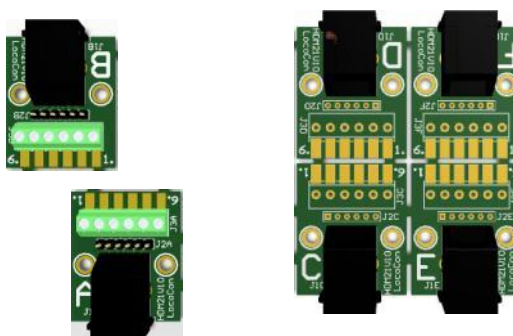
4) 3x LocoIO extension  
LocoNet 3 connections



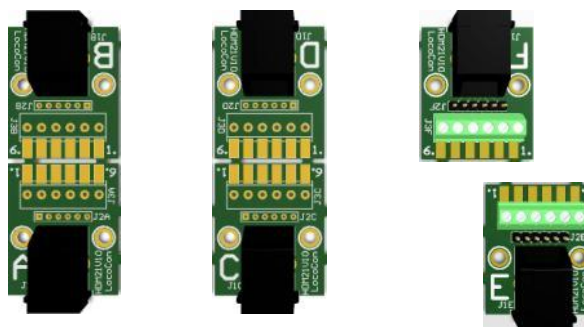
- 5a) LocoNet 4 connections  
2x LocoIO extension



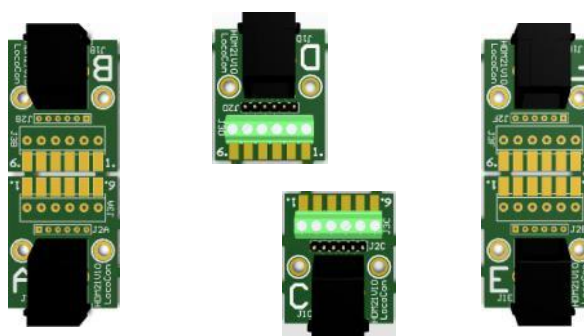
- 5b) 2x LocoIO extension  
LocoNet 4 connections



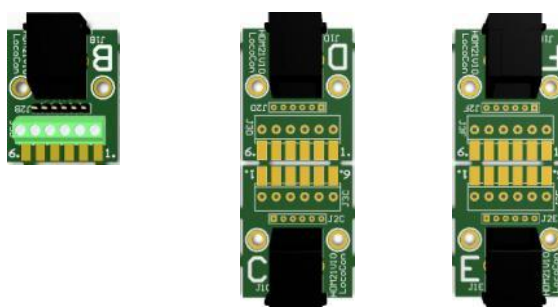
- 6a) 2x LocoNet 2 connections  
2x LocoIO extension



- 6b) 2x LocoNet 2 connections  
2x LocoIO extension

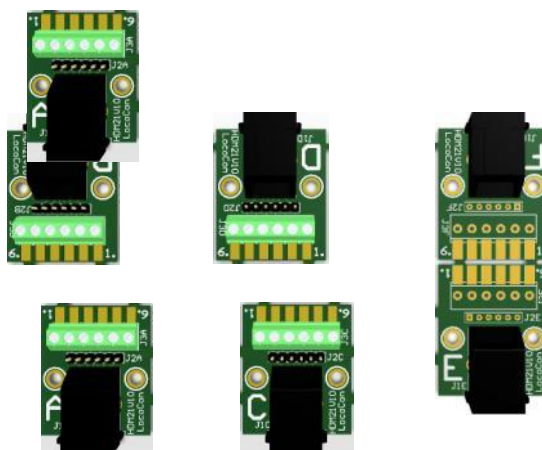


- 6c) 2x LocoNet 2 connections  
2x LocoIO extension

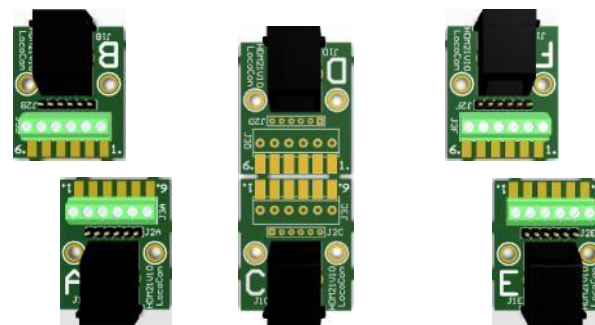




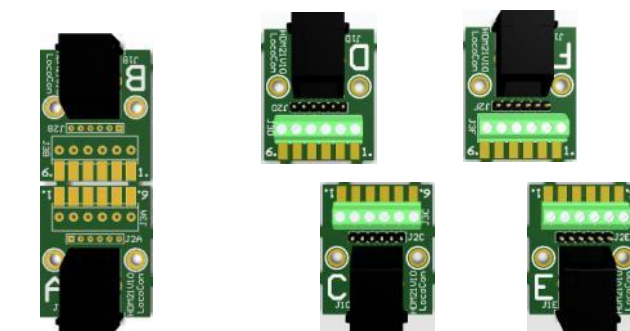
7a) 4x LocoIO extension  
1x LocoNet 2 connections



7b) 4x LocoIO extension  
1x LocoNet 2 connections



7c) 4x LocoIO extension  
1x LocoNet 2 connections



8) 6x LocoIO extension

